

FINISHES

2020

FINISHES

PEDRALI

**Pedrali SpA**

Sp 122 Mornico Al Serio

24050 Bergamo - Italy

Export Dept. Tel: +39 035 8358840

Ufficio Commerciale Italia Tel: +39 035 8358810

[info@pedrali.it](mailto:info@pedrali.it)

[www.pedrali.it](http://www.pedrali.it)

FINISHES\_2001

2020

**PEDRALI**<sup>®</sup>  
THE ITALIAN ESSENCE

# Finishes index

## Indice delle finiture

PRODUCT NAME NOME PRODOTTO	PAGE PAGINA
<b>Fabrics</b> / Tessuto	009
<b>Hard Leather</b> / Cuoio	042
<b>Leather</b> / Pelle	038
<b>Simil Leather</b> / Finta pelle	029
<b>Velvet</b> / Velluto	045

Beauty,  
tradition  
and innovation

## Material for upholstery and cushions Rivestimenti per imbottiture e cuscini



# Legend

## Legenda



**Fire-retardant**  
Ignifugo



**Outdoor use**  
Adatto per uso esterno

### washing / lavaggio



**Do not wash**  
Lavaggio a secco



**Hand wash**  
Lavaggio a mano



**Wash at max 30°C normal**  
Lavaggio normale, max 30°C



**Wash at max 30°C mild**  
Lavaggio delicato, max 30°C



**Wash at max 40°C normal**  
Lavaggio normale, max 40°C



**Wash at max 60°C mild**  
Lavaggio delicato, max 60°C

### dry cleaning / lavaggio a secco



**Do not dry clean**  
Lavaggio a secco non consentito



**Dry clean, tetrachloroethylene (PCE)**  
Lavaggio a secco con percloroetilene (PCE)



**Gentle dry cleaning with PCE**  
Lavaggio a secco delicato con PCE

### drying / asciugatura



**Do not tumble dry**  
Non asciugare in asciugatrice



**Dry flat**  
Asciugare disteso

### ironing / stiratura



**Do not iron**  
Non stirare



**Iron at low temperature**  
Stirare a bassa temperatura



**Iron at medium temperature**  
Stirare a media temperatura

### bleaching / candeggiio



**Do not bleach**  
Non candeggiare



**Any bleaching agent allowed**  
Candeggiio consentito



**Compliant to Ecolabel UE**  
**environmental requirements**  
Conforme ai requisiti ambientali Ecolabel UE

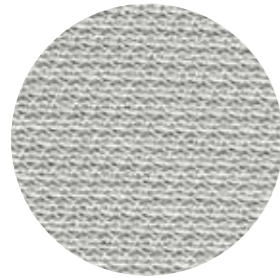


**96/98/CE – 2010/68/UE**  
**EU marine equipment rules compliant**  
Conforme ai requisiti europei per  
equipaggiamenti marittimi

# Fabrics

## Tessuti

CATEGORY B / CATEGORIA B

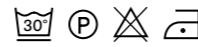


B 01



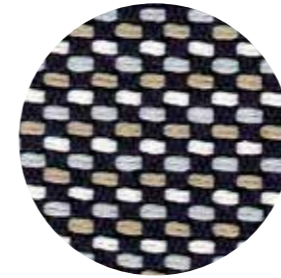
B 02

technical specifications / specifiche tecniche

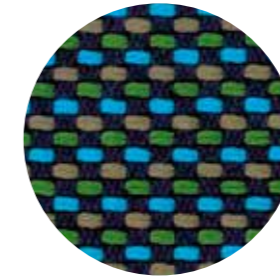


- **COMPOSITION / COMPOSIZIONE**  
100% Nylon (Support film PVC)
- **ABRASION / ABRASIONE**  
>50.000 cycles, Martindale (UNI EN ISO 12947:00)
- **RUBBING FASTNESS / SOLIDITÀ ALLO SFREGAMENTO**  
5, scale 1-5 (UNI EN ISO 105 X12:97)
- **PILLING**  
5, scale 1-5 (UNI EN ISO 12945-2:00)
- **LIGHT FASTNESS / SOLIDITÀ ALLA LUCE**  
5, scale 1-8 (UNI EN ISO 105-B02:01)

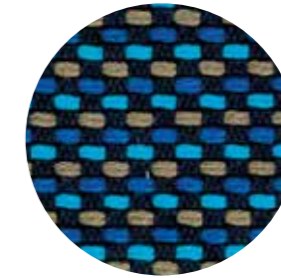
CATEGORY C / CATEGORIA C



C 37



C 38



C 39



C 36

technical specifications / specifiche tecniche

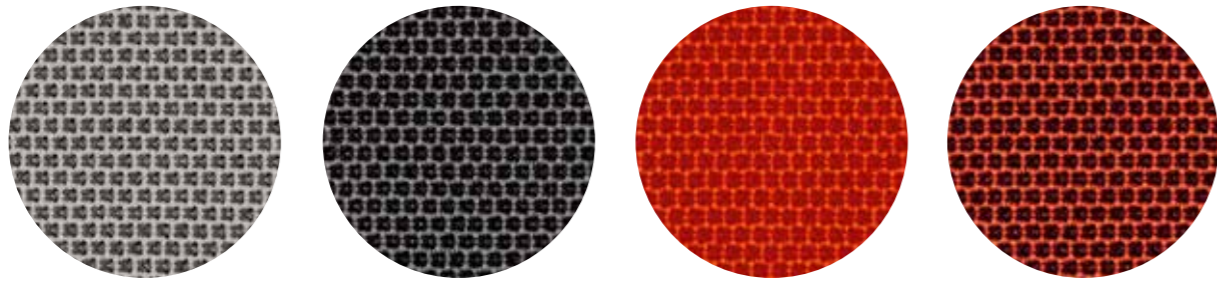


- **COMPOSITION / COMPOSIZIONE**  
94% Cotton  
6% Polyamide
- **ABRASION / ABRASIONE**  
40.000 cycles, Martindale (BS EN ISO 12947-2 1999)
- **RUBBING FASTNESS / SOLIDITÀ ALLO SFREGAMENTO**  
Dry 4-5 and Wet 2-3, scale 1-5 (BS EN ISO 105-X12:1995)
- **PILLING**  
4, scale 1-5 (BS EN ISO 12945-2:2001 to 5.000 cycles)
- **LIGHT FASTNESS / SOLIDITÀ ALLA LUCE**  
4-5 (light colours)  
5 (medium-dark colours) (BS EN ISO 105-B02:2001)

only for collection / solo per collezioni



Island

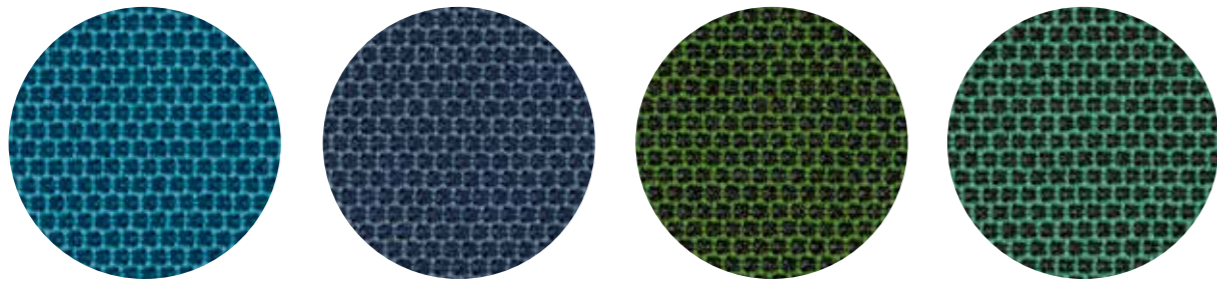


C 101

C 86

C 85

C 89

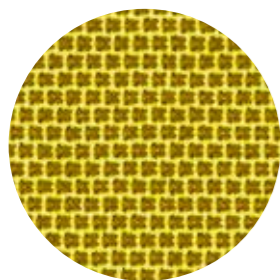


C 83

C 100

C 84

C 88



C 87

technical specifications / specifiche tecniche

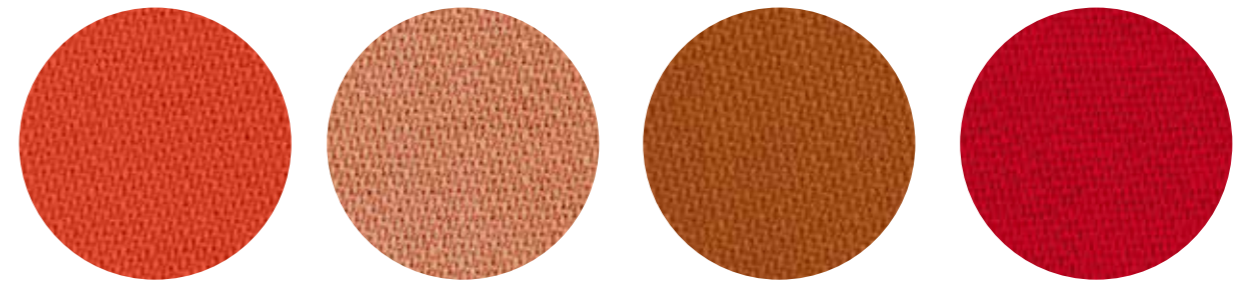


- COMPOSITION / COMPOSIZIONE  
54% New Zealand Wool  
44% Post-consumer recycled, polyester  
2% Polyamide
- ABRASION / ABRASIONE  
100.000 cycles, Martindale  
(EN ISO 12947-2)

- RUBBING FASTNESS / SOLIDITÀ ALLO SFREGAMENTO  
Dry and Wet 4-5, scale 1-5  
(EN ISO 105-X12:1995)
- PILLING  
4-5, scale 1-5 (EN ISO 12945-2)
- LIGHT FASTNESS / SOLIDITÀ ALLA LUCE  
5-7, scale 1-8 (EN ISO 105-B02)

- FLAME RESISTANCE  
RESISTENZA AL FUOCO  
BS EN 1021 1&2  
BS EN 1021-1  
BS 5852 Part 1 0, 1  
US CA TB 117-2013

- APPROVED / OMOLOGATO

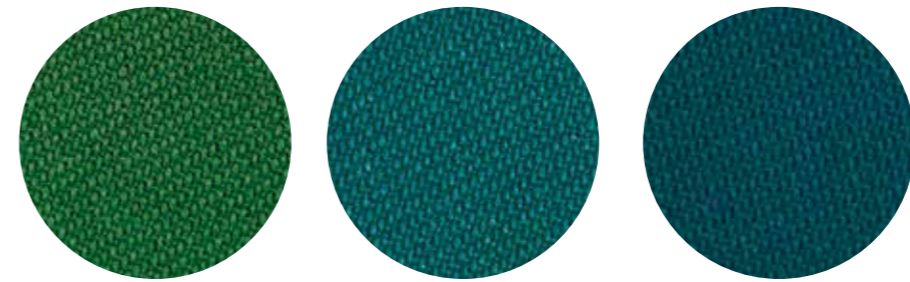


C 110

C 111

C 112

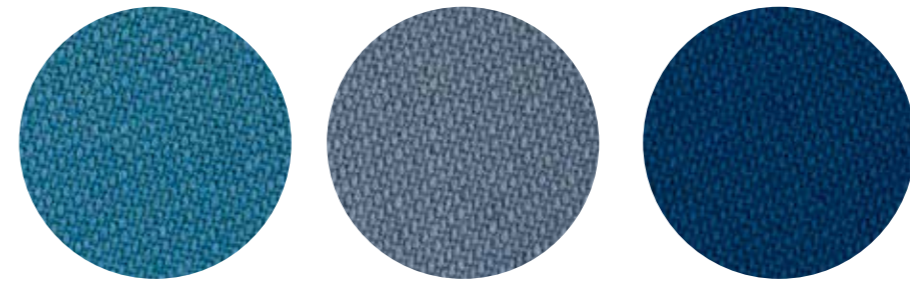
C 113



C 117

C 118

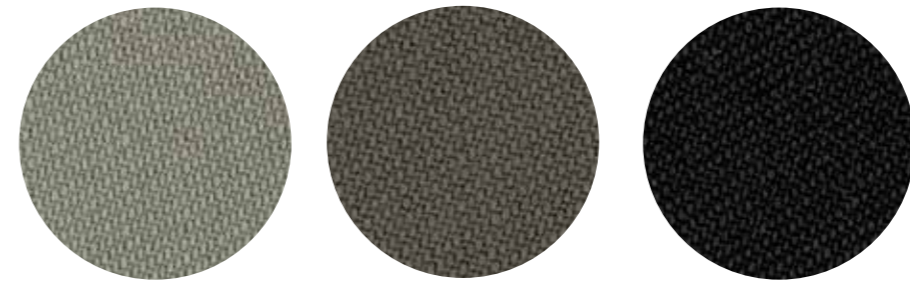
C 119



C 120

C 121

C 122



C 114

C 115

C 116

technical specifications / specifiche tecniche

- APPROVED / OMOLOGATO

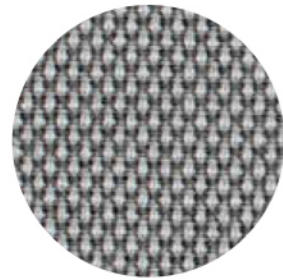


- COLLECTION / COLLEZIONE  
**svensson - SEMI**
- COMPOSITION / COMPOSIZIONE  
85% Wool, 15% Polyamide
- ABRASION / ABRASIONE  
100.000 cycles,  
Martindale  
(EN ISO 12947-2)
- RUBBING FASTNESS  
SOLIDITÀ ALLO SFREGAMENTO  
Dry 4 and Wet 3-4, scale 1-5  
(EN ISO 105-X12)
- LIGHT FASTNESS  
SOLIDITÀ ALLA LUCE  
5-7, scale 1-8  
(EN ISO 105-B02)
- FLAME RESISTANCE / RESISTENZA AL FUOCO  
BS 5852 Crib 5  
EN ISO 1021 Part 1&2  
IMO FTP Code 2010: Part 8  
UNI 9175 e UNI 9175/FA1 Classe 1 IM





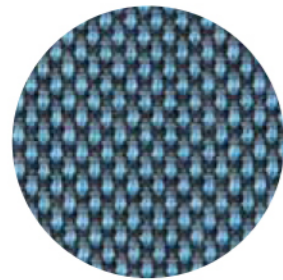
CATEGORY D / CATEGORIA D



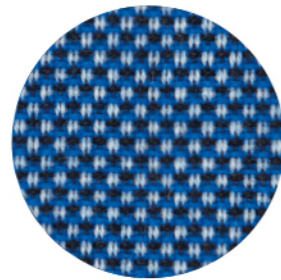
D 40



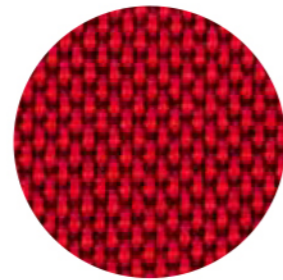
D 41



D 43



D 44



D 42

technical specifications / specifiche tecniche

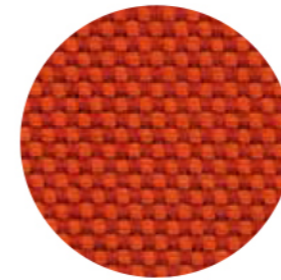


- **COMPOSITION / COMPOSIZIONE**  
88% New Zealand Wool  
12% Polyamide
- **ABRASION / ABRASIONE**  
100.000 cycles, Martindale  
(EN ISO 12947-2)
- **RUBBING FASTNESS / SOLIDITÀ ALLO SFREGAMENTO**  
Dry and Wet 4-5, scale 1-5  
(EN ISO 105-X12)
- **PILLING**  
4-5, scale 1-5 (EN ISO 12945-2)
- **LIGHT FASTNESS / SOLIDITÀ ALLA LUCE**  
5-7, scale 1-8 (EN ISO 105-B02)
- **FLAME RESISTANCE / RESISTENZA AL FUOCO**  
BS EN 1021 1&2  
BS 5852 Part 1 0, 1  
UNI 9175 Classe 1 IM  
US CA TB 117-2013

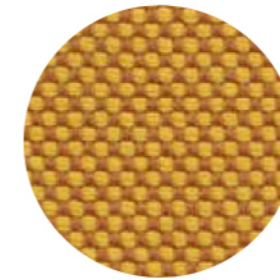
- APPROVED / OMOLOGATO



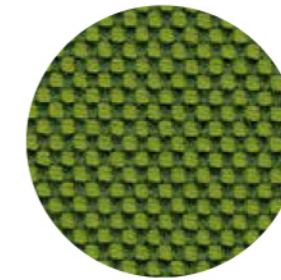
CATEGORY G / CATEGORIA G



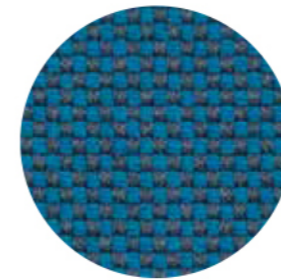
G 170



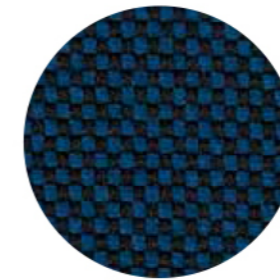
G 171



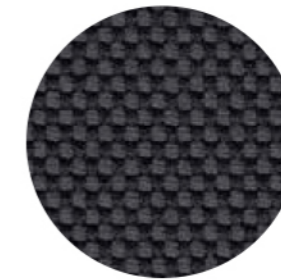
G 172



G 173



G 174



G 175



G 176

technical specifications / specifiche tecniche

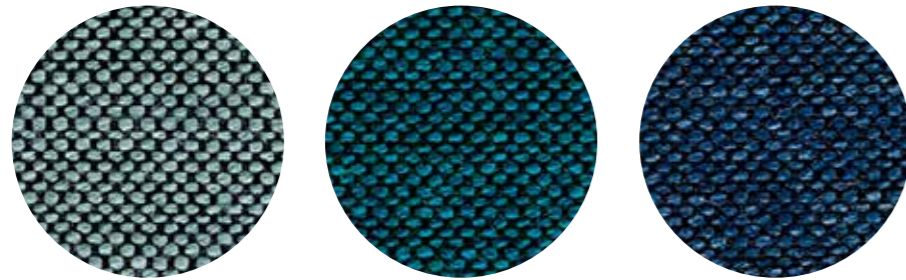


- **COMPOSITION / COMPOSIZIONE**  
96% Virgin Wool  
4% Polyamide
- **ABRASION / ABRASIONE**  
90.000 cycles, Martindale  
(DIN EN ISO 12947-2)
- **PILLING**  
4-5, scale 1-5 (EN ISO 12945-2)
- **LIGHT FASTNESS / SOLIDITÀ ALLA LUCE**  
5-8, scale 1-8 (EN ISO 105-B02)
- **SOUND ABSORPTION / ASSORBIMENTO ACUSTICO**  
folded:  $\alpha_w = 0.95$  Class A (ISO 11654)
- **FLAME RESISTANCE / RESISTENZA AL FUOCO**  
BS 5852:1979 (Part 1)  
BS 5852:2006 (Part 2) Crib 5  
DIN 4102-1 B2
- **EN 13501-1**  
EN 1021 -1 and -2  
FAR 25.853 (12 sec. vertical)  
IMO: 2014/90/EU (MED)  
US CA TB 117-2013

- APPROVED / OMOLOGATO



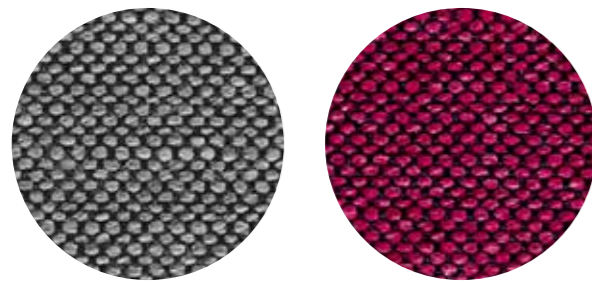




G 154

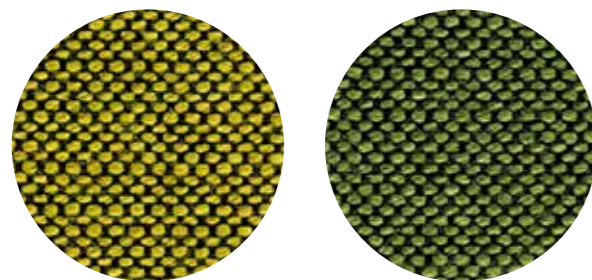
G 155

G 156



G 151

G 150



G 152

G 153

technical specifications / specifiche tecniche

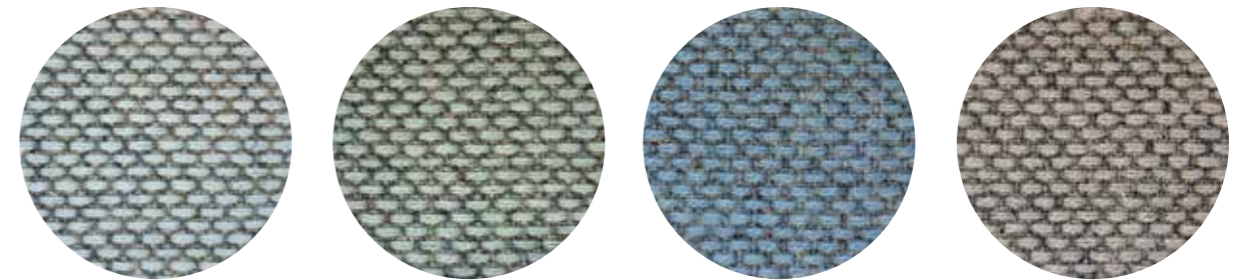


- COLLECTION / COLLEZIONE  
**svensson** - BALANCE
- COMPOSITION / COMPOSIZIONE  
82% Wool  
12% Rami  
6% Polyamide

- ABRASION / ABRASIONE  
100.000 cycles, Martindale (EN ISO 12947-2)
- RUBBING FASTNESS / SOLIDITÀ ALLO SFREGAMENTO  
Dry 4 and Wet 3-4, scale 1-5  
(EN ISO 105-X12)
- LIGHT FASTNESS / SOLIDITÀ ALLA LUCE  
5-7, scale 1-8 (EN ISO 105-B02)

- FLAME RESISTANCE / RESISTENZA AL FUOCO  
BS 5852 Crib 5  
EN ISO 1021 Part 1&2  
IMO FTP Code 2010: Part 8  
UNI 9175 Classe 1 IM  
US CA TB 117-2013

- APPROVED / OMOLOGATO

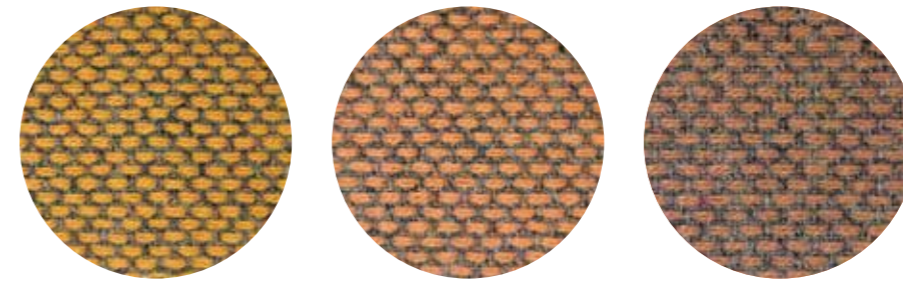


G 143

G 145

G 144

G 146



G 140

G 141

G 142

technical specifications / specifiche tecniche



- COLLECTION / COLLEZIONE  
**kvadrat** - RE-WOOL  
DESIGNER Margrethe Odgaard
- COMPOSITION / COMPOSIZIONE  
45% Recycled wool  
45% New wool  
10% Nylon
- ABRASION / ABRASIONE  
50.000 cycles, Martindale  
(DS/EN ISO 12947-2:2016)

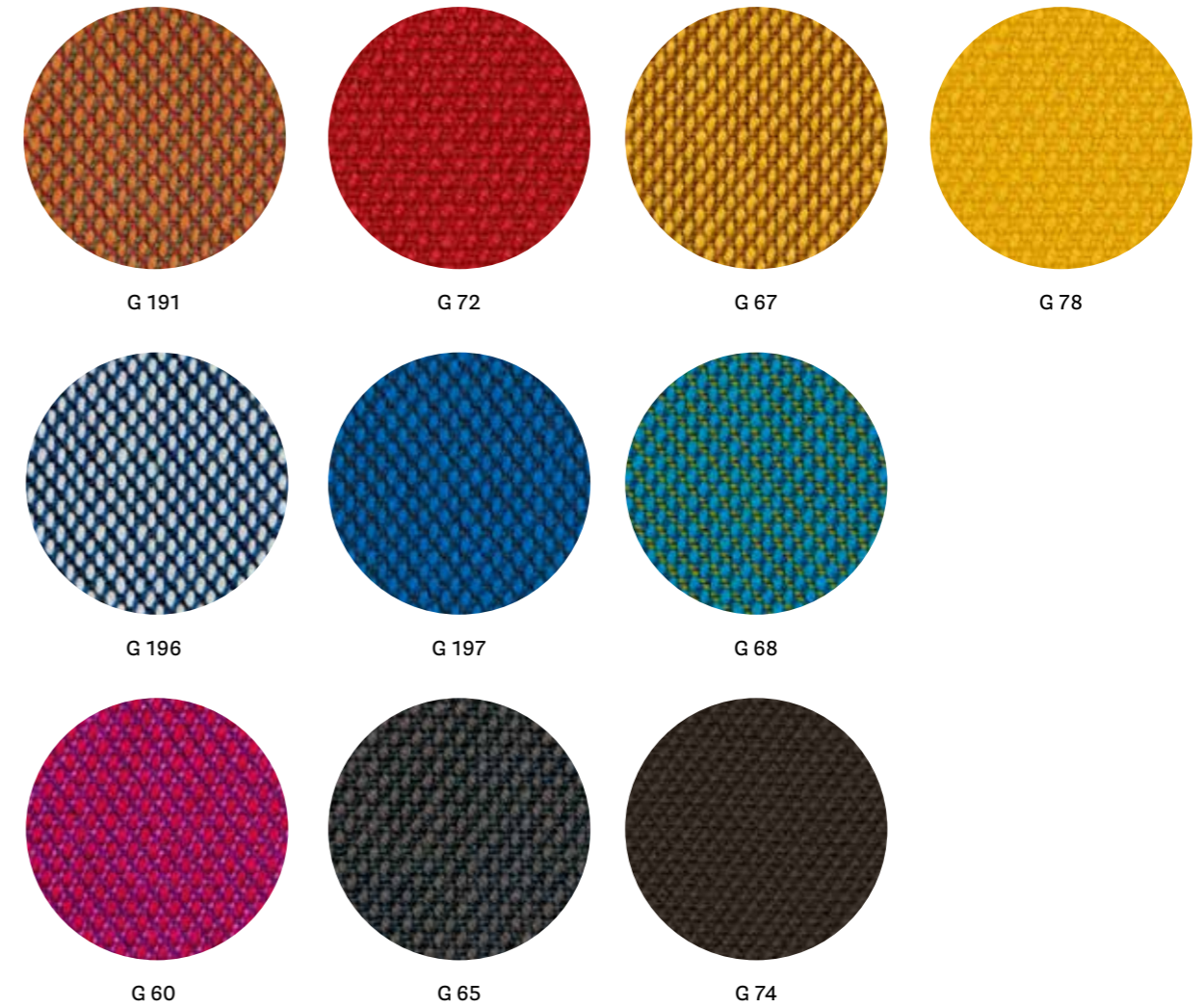
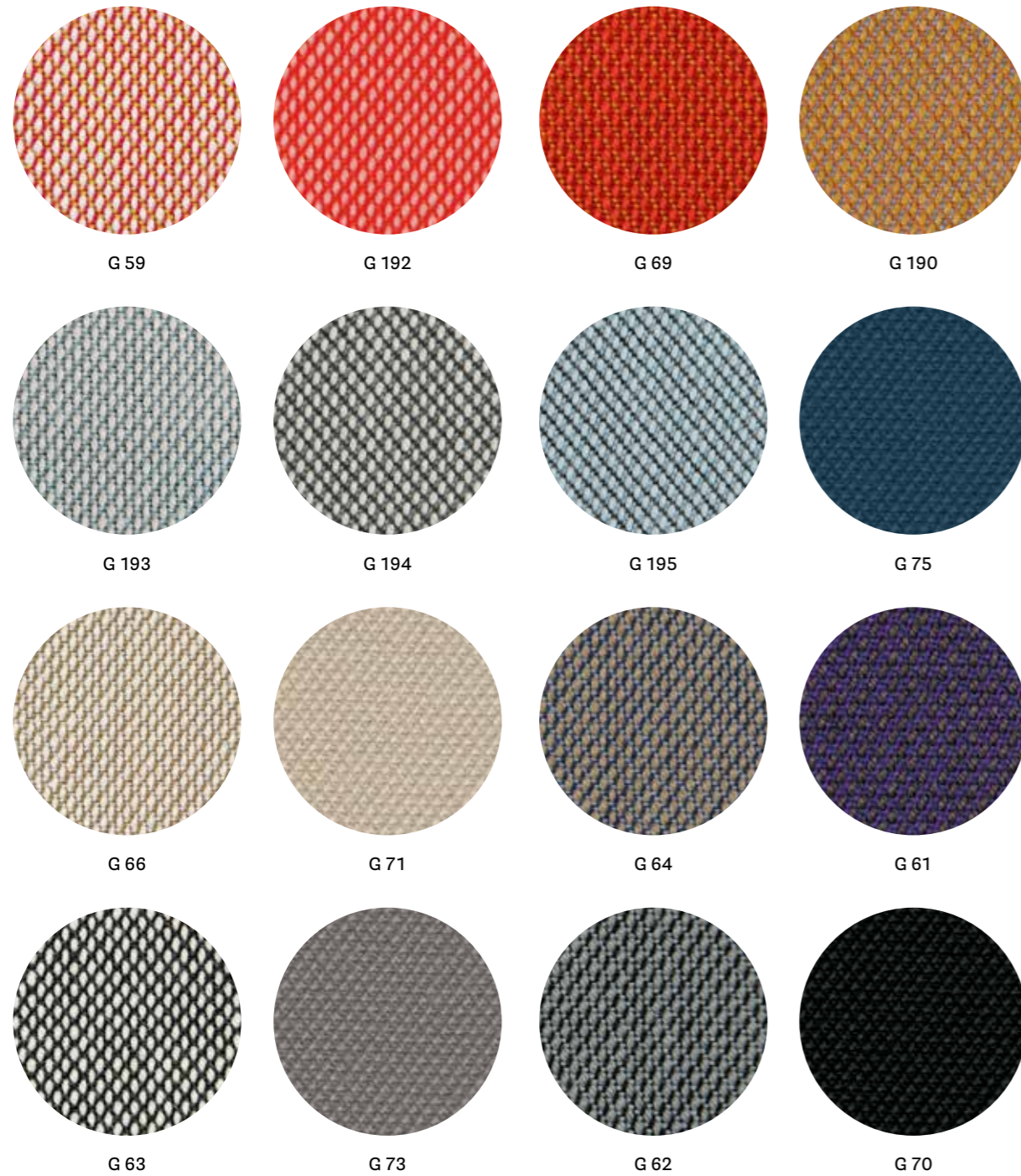
- RUBBING FASTNESS / SOLIDITÀ ALLO SFREGAMENTO  
Dry and Wet 4-5, scale 1-5  
(ISO 105-X12)
- PILLING  
4, scale 1-5 (EN ISO 12945)
- LIGHT FASTNESS / SOLIDITÀ ALLA LUCE  
5-7, scale 1-8 (ISO 105-B02:2014)
- SOUND ABSORPTION / ASSORBIMENTO ACUSTICO  
folded:  $\alpha_w = 0.75$  Class C (ISO 11654)

- FLAME RESISTANCE / RESISTENZA AL FUOCO  
AS/NZS 1530.3  
BS 5852 Part 1  
BS 5852 Crib 5 with treatment  
BS 5852 IGNITION SOURCE 3  
EN 1021 - 1/2  
IMO FTP Code 2010: Part 8  
NF D60-013  
ÖNORM B1/Q1  
UNI 9175 Classe 1IM  
US CA TB 117-2013

- APPROVED / OMOLOGATO







technical specifications / specifiche tecniche



• COLLECTION / COLLEZIONE

**kvadrat**

STEELCUT TRIO 3

except

G61, G60, G68: STEELCUT TRIO 2

G70+G78: STEELCUT 2

DESIGNERS Dijkmeijer & Ridolfo

• COMPOSITION / COMPOSIZIONE

90% New wool

10% Nylon

• ABRASION / ABRASIONE

100.000 cycles,

for G70+G78: 80.000 cycles

Martindale (DS/EN ISO 12947-2:2016)

• PILLING

4, scale 1-5

for G70+G78: 3-4, scale 1-5

(EN ISO 12945)

• LIGHT FASTNESS / SOLIDITÀ ALLA LUCE

5-7, scale 1-8 (EN ISO 105-B02)

• SOUND ABSORPTION / ASSORBIMENTO ACUSTICO

folded:  $\alpha_w=0.95$  Class A

for G70+G78: folded:  $\alpha_w=0.80$  Class B

(ISO 11654)

• FLAME RESISTANCE / RESISTENZA AL FUOCO

AS/NZS 1530.3

AS/NZS 3837 Class 2

BS 5852 Part 1

BS 5852 Crib 5 with treatment

DIN 4102 B2

EN 1021 - 1/2

IMO FTP Code 2010: Part 8

NF D60-013

NFPA 260

ÖNORM B1/Q1

SN 198 898 5.3 with treatment

UNI 9175 Classe 1 IM

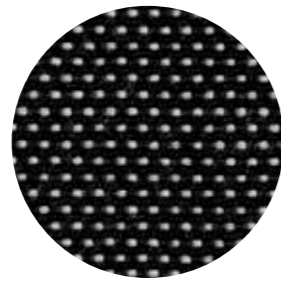
US CA TB 117-2013

• APPROVED / OMOLOGATO

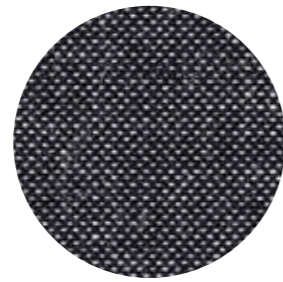




G 101



G 100



G 102

technical specifications / specifiche tecniche



- COLLECTION / COLLEZIONE  
**kvadrat** - BASEL  
DESIGNERS Herzog & de Meuron
- COMPOSITION / COMPOSIZIONE  
90% New wool  
10% Nylon
- ABRASION / ABRASIONE  
50.000 cycles,  
Martindale (EN ISO 12947-2:1998)

- PILLING  
4, scale 1-5 (EN ISO 12945)
- LIGHT FASTNESS / SOLIDITÀ ALLA LUCE  
6-7, scale 1-8 (ISO 105-B02)
- FLAME RESISTANCE / RESISTENZA AL FUOCO  
AS/NZS 3837 Class 2  
BS 5852 Part 1  
BS 5852 Crib 5 with treatment

DIN 4102 B2  
EN 1021 - 1/2  
IMO FTP Code 2010: Part 8  
NFPA 260  
NF D60-013  
ÖNORM B1/Q1  
SN 198 898 5.3 with treatment  
UNI 9175 Classe 1 IM  
US CA TB 117-2013

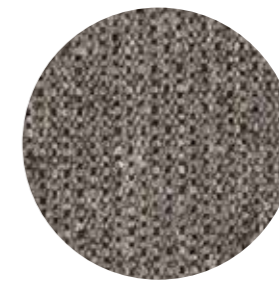
- APPROVED / OMOLOGATO



G 120



G 121



G 122

technical specifications / specifiche tecniche



- COLLECTION / COLLEZIONE  
**kvadrat** - MOLLY 2  
DESIGNER Åsa Pärson
- COMPOSITION / COMPOSIZIONE  
100% New wool
- ABRASION / ABRASIONE  
75-100.000 cycles,  
Martindale (EN ISO 12947-2:1998)

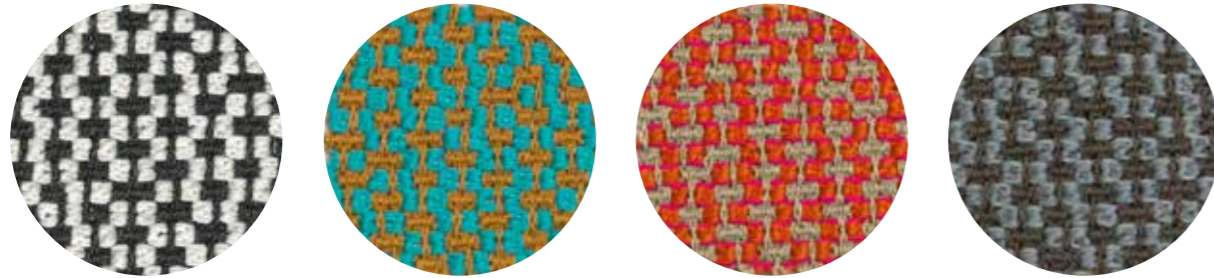
- PILLING  
3-4, scale 1-5 (EN ISO 12945)
- LIGHT FASTNESS / SOLIDITÀ ALLA LUCE  
6-7, scale 1-8 (ISO 105-B02)
- FLAME RESISTANCE / RESISTENZA AL FUOCO  
BS 5852 Part 1  
BS 5852 Crib 5 with treatment  
DIN 4102 B2

EN 1021 - 1/2  
IMO FTP Code 2010: Part 8  
NFPA 260  
NF D60-013  
ÖNORM B1/Q1  
UNI 9175/UNI 9176 Classe 1 IM  
US CA TB 117-2013

- APPROVED / OMOLOGATO







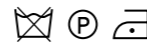
G 130

G 131

G 132

G 133

technical specifications / specifiche tecniche

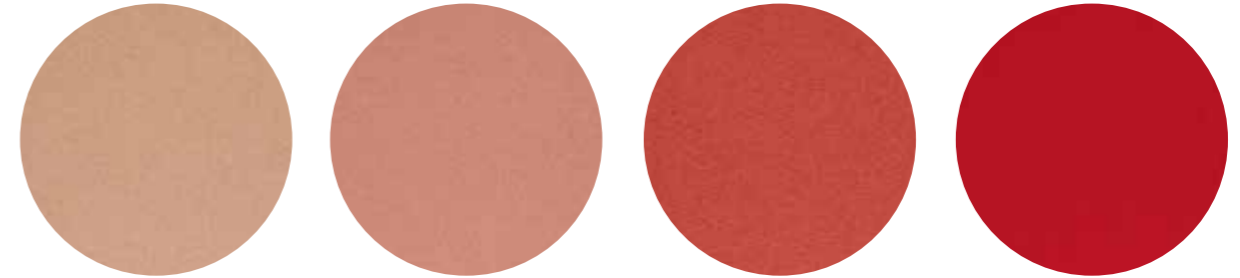


- COMPOSITION / COMPOSIZIONE  
95% Virgin Wool  
5% Polyamide
- ABRASION / ABRASIONE  
52.000 cycles, Martindale  
(DIN EN ISO 12947-2)
- PILLING  
4-5, scale 1-5 (EN ISO 12945-2)

- LIGHT FASTNESS / SOLIDITÀ ALLA LUCE  
5-8, scale 1-8 (EN ISO 105-B02)
- SOUND ABSORPTION / ASSORBIMENTO ACUSTICO  
folded:  $\alpha_w = 0.85$  Class B (ISO 11654)
- FLAME RESISTANCE / RESISTENZA AL FUOCO  
BS 5852:1979 (Part 1)  
BS 5852:2006 (Part 2) Crib 5  
DIN 4102-1 B2

EN 1021 -1 and -2  
EN 13501-1  
FAR 25.853 (12 sec. vertical)  
IMO: 2014/90/EU (MED)  
UNI 9175 Classe 1 IM  
US CA TB 117-2013

- APPROVED / OMOLOGATO

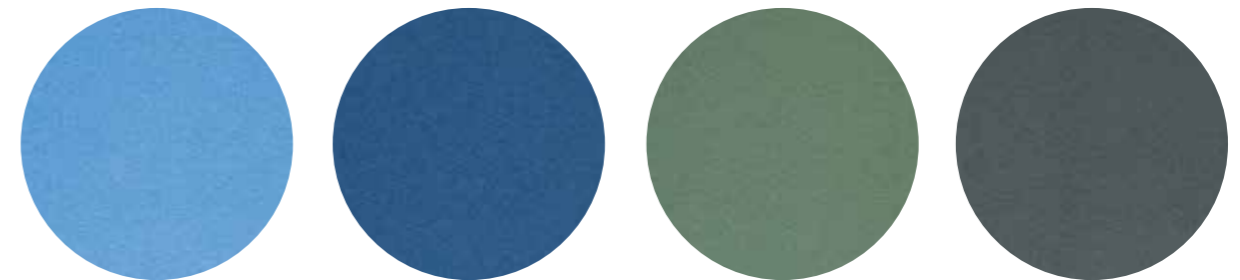


G 163

G 160

G 161

G 162

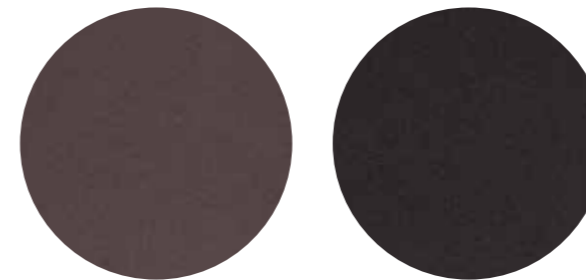


G 165

G 166

G 167

G 168



G 164

G 169

technical specifications / specifiche tecniche



- COLLECTION / COLLEZIONE  
**kvadrat** - HERO  
DESIGNER Patricia Urquiola
- COMPOSITION / COMPOSIZIONE  
96% New wool  
4% Nylon
- ABRASION / ABRASIONE  
45.000 cycles, Martindale  
(EN ISO 12947)
- PILLING  
3-4, scale 1-5 (EN ISO 12945)

- LIGHT FASTNESS / SOLIDITÀ ALLA LUCE  
5-6, scale 1-8 (ISO 105-B02)
- SOUND ABSORPTION / ASSORBIMENTO ACUSTICO  
folded:  $\alpha_w = 0.75$  Class C (ISO 11654)
- FLAME RESISTANCE / RESISTENZA AL FUOCO  
AS/NZS 3837 Class 2  
BS 5852 Crib 5 with treatment  
BS 5852 Part 1  
DIN 4102 B2  
EN 1021 - 1/2  
IMO FTP Code 2010: Part 8

NF D60-013  
NFPA 260  
SN 198 898 5.3 with treatment  
UNI 9175 Classe 1 IM  
US CA TB 117-2013

- APPROVED / OMOLOGATO



CATEGORY G / CATEGORIA G



G 24

G 114

G 115

G 113

G 111

G 116

G 110

G 112

G 21

G 25

G 22

G 23

technical specifications / specifiche tecniche



COLLECTION / COLLEZIONE

**kvadrat**

G21, G22, G25: DIVINA MELANGE 2  
G24, G23: DIVINA MELANGE 3  
G110+G116: DIVINA MD  
DESIGNER Finn Skødt

COMPOSITION / COMPOSIZIONE

100% New Wool

ABRASION / ABRASIONE

45.000 cycles, Martindale  
(EN ISO 12947)

PILLING

3, scale 1-5 (EN ISO 12945)

LIGHT FASTNESS / SOLIDITÀ ALLA LUCE

5-7, scale 1-8 (ISO 105-B02)

SOUND ABSORPTION / ASSORBIMENTO ACUSTICO

folded:  $\alpha_w = 0.70$  Class C (ISO 11654)

FLAME RESISTANCE / RESISTENZA AL FUOCO

AS/NZS 1530.3  
BS 5852 Crib 5  
BS 5852 Part 1  
BS 5867 part 2 type B (only for G23, G24)  
DIN 4102 B2  
EN 1021-1/2  
EN 13501, C-s1, d0, glued  
IMO FTP Code 2010: Part 8

NF D60013

NFPA 260

ÖNORM B1/ Q1

SN 198 898 5.3 with treatment

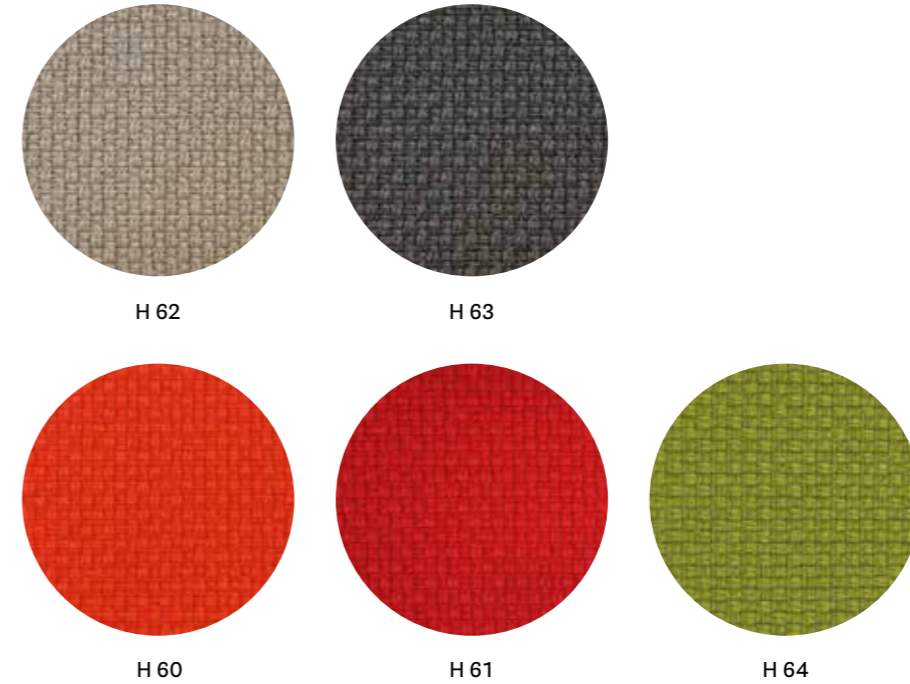
UNI 9175 Classe 1 IM

US CA TB 117-2013

APPROVED / OMOLOGATO



CATEGORY H / CATEGORIA H



H 62

H 63

H 60

H 61

H 64

technical specifications / specifiche tecniche



COMPOSITION / COMPOSIZIONE

92% New Zealand Wool  
8% Polyamide

ABRASION / ABRASIONE

200.000 cycles, Martindale  
(EN ISO 12947-2)

RUBBING FASTNESS / SOLIDITÀ ALLO SFREGAMENTO

Dry and Wet 4-5, scale 1-5  
(EN ISO 105-X12)

PILLING

4, scale 1-5 (EN ISO 12945-2)

LIGHT FASTNESS / SOLIDITÀ ALLA LUCE

5-7, scale 1-8 (EN ISO 105-B02)

FLAME RESISTANCE / RESISTENZA AL FUOCO

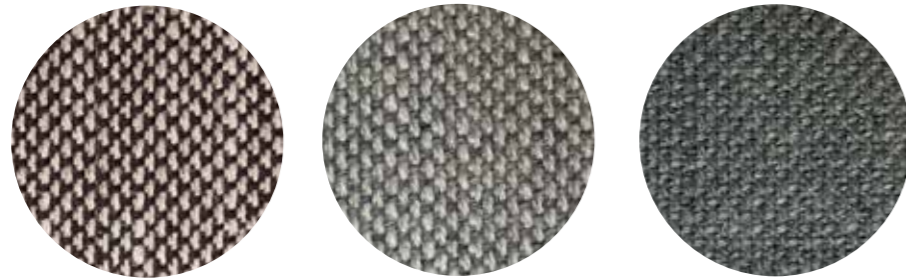
BS EN 1021 1&2  
BS EN 1021-1  
BS 5852 Part 1 0, 1  
UNI 9175 Classe 1 IM  
US CA TB 117-2013

APPROVED / OMOLOGATO





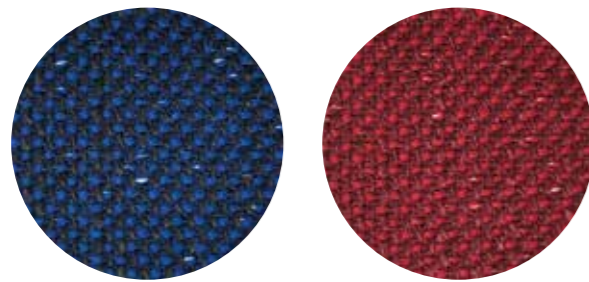
CATEGORY N / CATEGORIA N



N 05

N 01

N 02



N 03

N 04

technical specifications / specifiche tecniche



- COLLECTION / COLLEZIONE  
**kvadrat** - SUNNIVA 2  
DESIGNERS Raf Simons & Fanny Aronsen
- COMPOSITION / COMPOSIZIONE  
58% New wool  
25% Viscose  
8% Linen  
5% Polyamide  
4% Polyester

- ABRASION / ABRASIONE  
50.000 cycles, Martindale  
(EN ISO 12947)
- PILLING  
3, scale 1-5 (EN ISO 12945)
- LIGHT FASTNESS / SOLIDITÀ ALLA LUCE  
5-7, scale 1-8 (ISO 105-B02)

- FLAME RESISTANCE / RESISTENZA AL FUOCO  
AS/NZS 3837, class 2  
BS 5852 Part 1  
BS 5852 Crib 5 with treatment  
DIN 4102 B2  
EN 1021 - 1/2  
NFPA 260  
US CA TB 117-2013

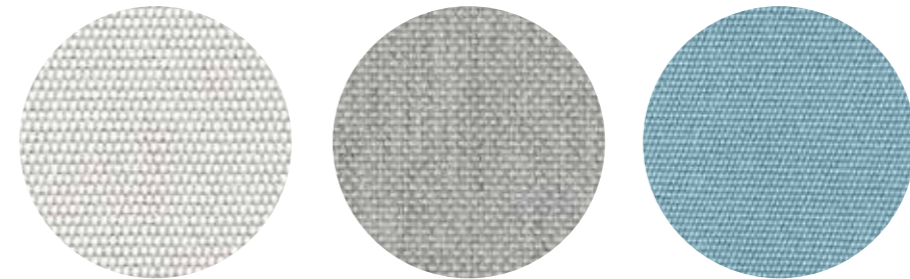
- APPROVED / OMOLOGATO



Outdoor



CATEGORY D / CATEGORIA D



D 37

D 38

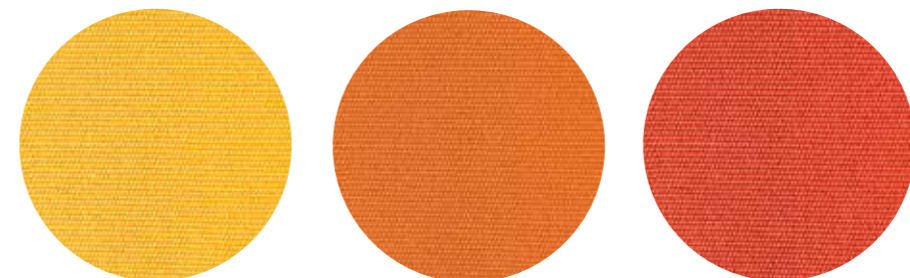
D 33



D 34

D 39

D 35



D 32

D 31

D 36

technical specifications / specifiche tecniche

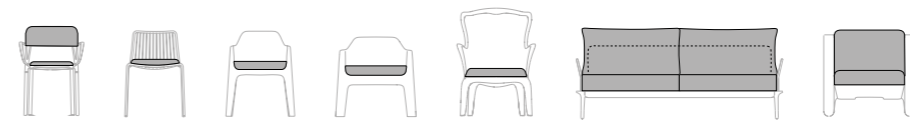


- COMPOSITION / COMPOSIZIONE  
100% Acrylic teflon

- ABRASION / ABRASIONE  
10.000 cycles, Martindale (EN ISO 12947)

- LIGHT FASTNESS / SOLIDITÀ ALLA LUCE  
7-8, scale 1-8 (EN ISO 105-B02)

for cushions only for collections / solo per cuscino delle collezioni



Intrigo

Nolita

Plus

Plus Air

Pasha

Reva

Sunset

Only for Nolita cushions: rim available in colours D34, D35 and D36 / Solo per cuscino Nolita: disponibile con bordino in diversi colori D34 D35 e D36

# Simil Leather

## Finta Pelle

CATEGORY A / CATEGORIA A

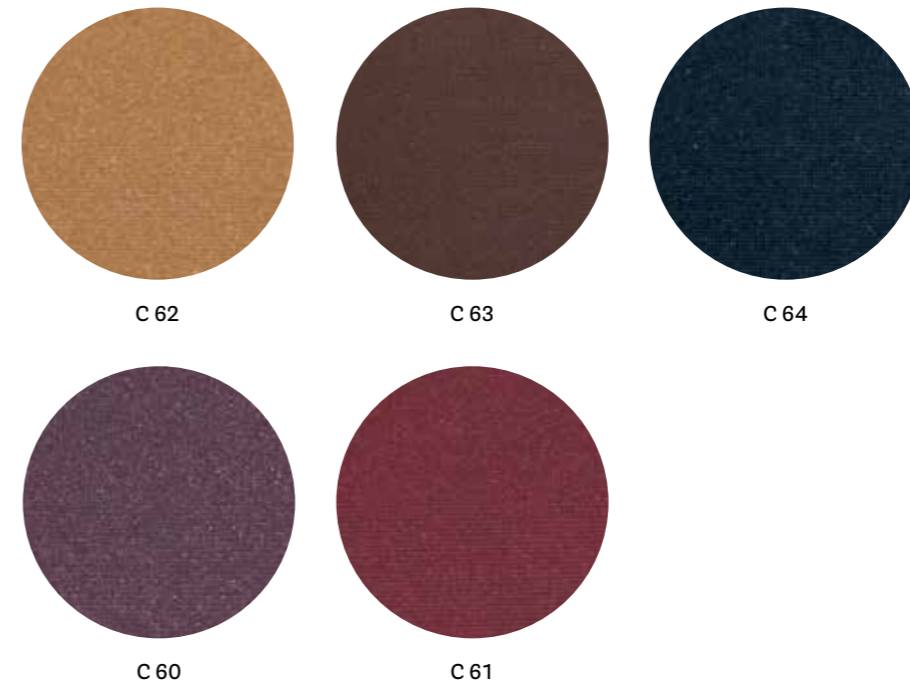


technical specifications / specifiche tecniche



- COMPOSITION / COMPOSIZIONE  
85% PVC  
15% Polyurethane
- ABRASION / ABRASIONE  
50.000 cycles, Martindale  
(UNI EN ISO 12947-2)
- RUBBING FASTNESS  
SOLIDITÀ ALLO SFREGAMENTO  
Dry and Wet 4-5, scale 1-5  
(UNI EN ISO 105-X12)
- LIGHT FASTNESS  
SOLIDITÀ ALLA LUCE  
6, scale 1-8  
(UNI EN ISO 105-B02)

CATEGORY C / CATEGORIA C

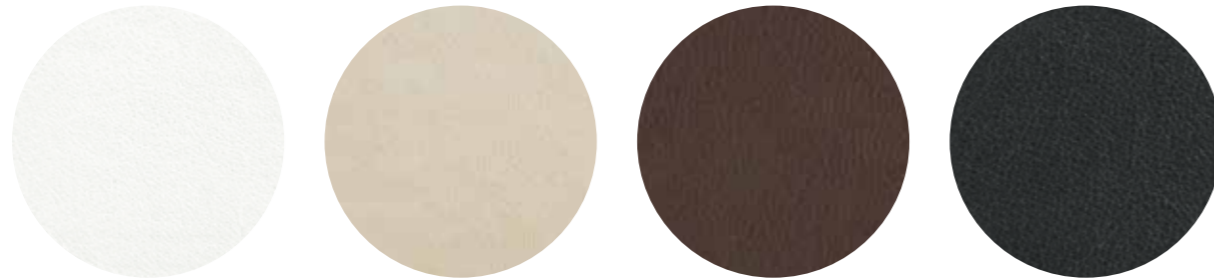


technical specifications / specifiche tecniche



- COMPOSITION / COMPOSIZIONE  
72% PVC  
25% Cotton  
3% Polyurethane
- ABRASION / ABRASIONE  
50.000 cycles, Martindale  
(EN ISO 5470-2)
- RUBBING FASTNESS / SOLIDITÀ ALLO SFREGAMENTO  
Dry and Wet 4-5, scale 1-5  
(UNI EN ISO 105-X12)
- LIGHT FASTNESS / SOLIDITÀ ALLA LUCE  
6, scale 1-8 (UNI EN ISO 105-B02)
- FLAME RESISTANCE / RESISTENZA AL FUOCO  
BS 5852-1 Part 1  
EN 1021-2  
IMO RESOLUTION A.652 (16): 1989  
UNI 9175 Classe 1 IM  
US CA TB 117-2013

CATEGORY C / CATEGORIA C

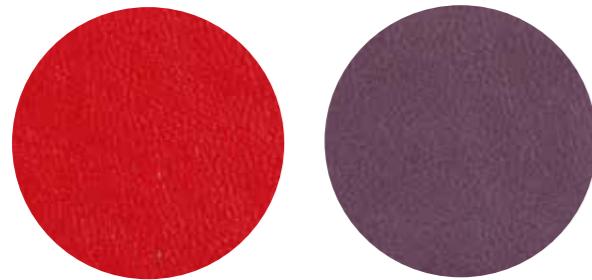


C 90

C 94

C 95

C 93



C 92

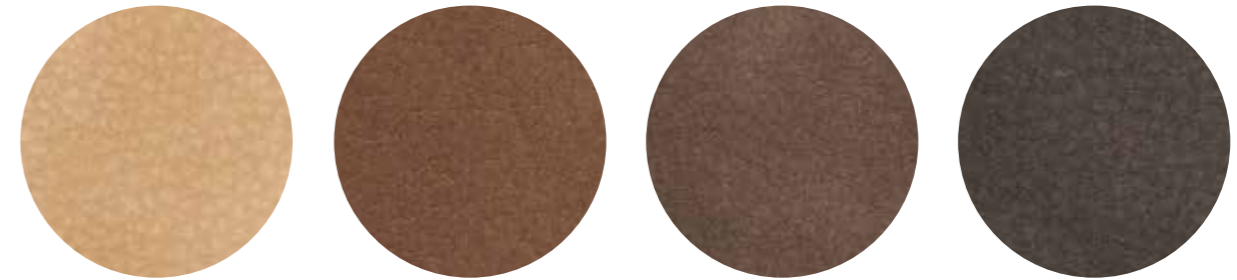
C 91

technical specifications / specifiche tecniche



- **COMPOSITION / COMPOSIZIONE**  
72% PVC  
25% Cotton  
3% Polyurethane
- **ABRASION / ABRASIONE**  
50.000 cycles, Martindale (EN ISO 5470-2)
- **RUBBING FASTNESS / SOLIDITÀ ALLO SFREGAMENTO**  
Dry and Wet 4-5, scale 1-5 (UNI EN ISO 105-X12)
- **LIGHT FASTNESS / SOLIDITÀ ALLA LUCE**  
6, scale 1-8 (UNI EN ISO 105-B02)
- **FLAME RESISTANCE / RESISTENZA AL FUOCO**  
BS 5852-1 Part 1  
EN 1021-2  
IMO RESOLUTION A.652 (16): 1989  
UNI 9175 Classe 1 IM  
US CA TB 117-2013

CATEGORY C / CATEGORIA C



C 45

C 46

C 47

C 48

technical specifications / specifiche tecniche



- **COMPOSITION / COMPOSIZIONE**  
80% PVC  
18% PES  
2% Polyurethane
- **ABRASION / ABRASIONE**  
50.000 cycles, Martindale (EN ISO 5470-2)
- **RUBBING FASTNESS / SOLIDITÀ ALLO SFREGAMENTO**  
Dry and Wet 4-5, scale 1-5 (UNI EN ISO 105-X12)
- **FLAME RESISTANCE / RESISTENZA AL FUOCO**  
RESISTENZA AL FUOCO  
BS 5852 Part 1 0,1  
EN 1021-1&2  
UNI 9175 Classe 1 IM





technical specifications / specifiche tecniche



- COMPOSITION / COMPOSIZIONE  
76% PVC  
22% PES  
2% Polyurethane
- ABRASION / ABRASIONE  
60.000 cycles, Martindale  
(ISO 5470-2)
- RUBBING FASTNESS / SOLIDITÀ ALLO SFREGAMENTO  
Dry and Wet 4-5, scale 1-5  
(ISO 105-X12)
- LIGHT FASTNESS / SOLIDITÀ ALLA LUCE  
6, scale 1-8 (ISO 105-B02)
- FLAME RESISTANCE / RESISTENZA AL FUOCO  
BS 5852-1 match test  
EN 1021 Part 1-2  
UNI 9175 Classe 1 IM  
US CA TB 117-2013



technical specifications / specifiche tecniche

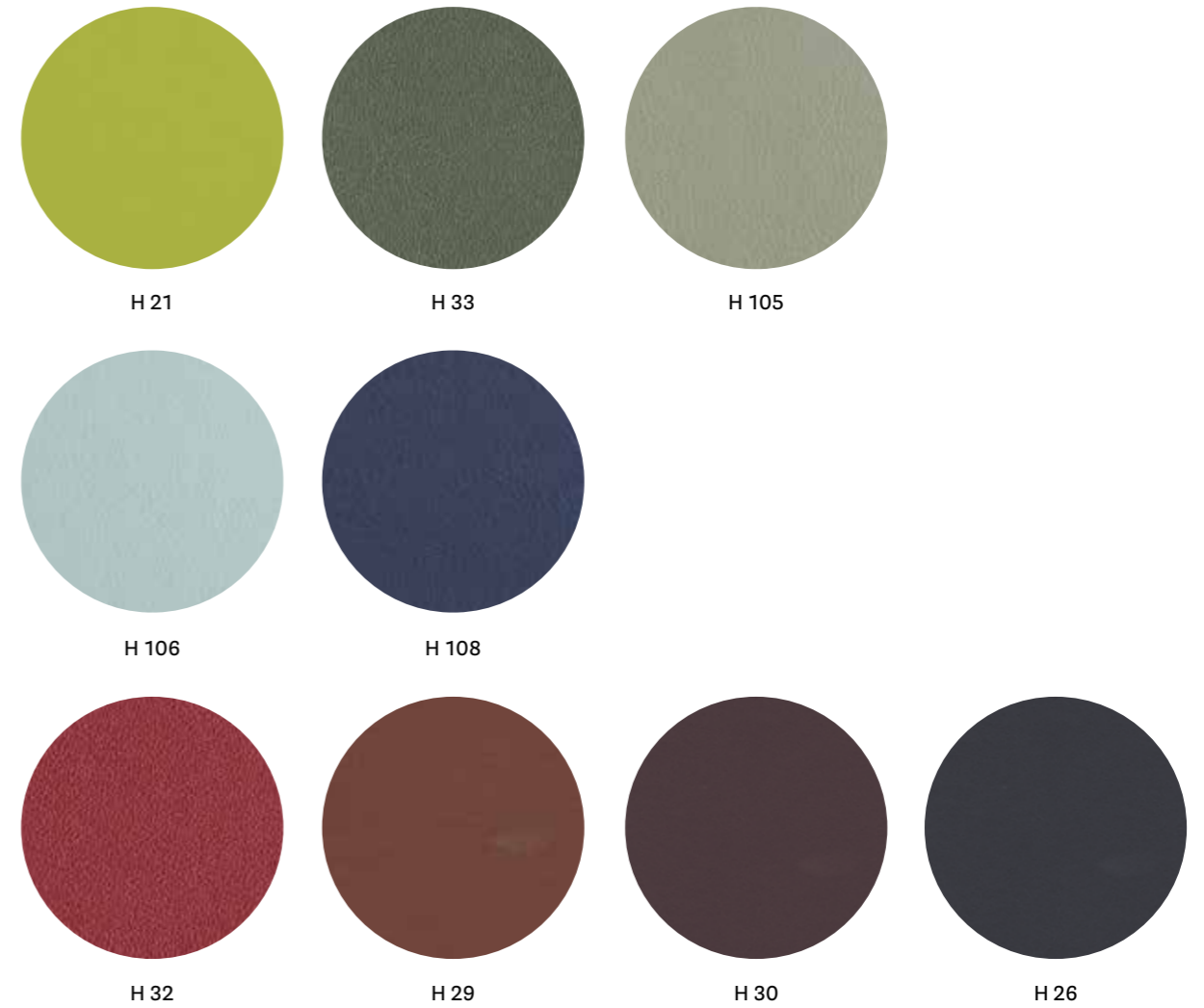


- COMPOSITION / COMPOSIZIONE  
85% PVC  
15% Cotton
- ABRASION / ABRASIONE  
150.000 cycles, Martindale  
(ISO 5470-2)
- LIGHT FASTNESS / SOLIDITÀ ALLA LUCE  
≥6, scale 1-8(EN ISO 105-B02)
- FLAME RESISTANCE / RESISTENZA AL FUOCO  
B2 (DIN 4102)  
BS 5852 Crib 5  
EN 1021.1-2  
EN 13501-1 - Cs3do  
FAR 25853 App F Part 1
- IMO RESOLUTION A.652  
NF D60-013 - AM 18  
NFP 92503 M1  
NY/NJ - Port Authority  
UFAC Fabric Class 1  
German fire standard B1 (except C12 and C22)  
US CATB 117  
US CATB 133

- APPROVED / OMOLOGATO







technical specifications / specifiche tecniche



- COMPOSITION / COMPOSIZIONE  
63% Polyurethane  
29% Cotton  
8% PES
- ABRASION / ABRASIONE  
150.000 cycles, Martindale  
(UNI EN ISO 12947-2)

- LIGHT FASTNESS / SOLIDITÀ ALLA LUCE  
5-6, scale 1-8 (UNI EN ISO 105-B02)
- FLAME RESISTANCE / RESISTENZA AL FUOCO  
BS 5852 Crib 5  
BS 5852 Part 1-2  
EN 1021 Part 1-2  
IMO resolution FTP Code 2010

IMO resolution A.652 (16):1989  
UNI 9175 Classe 1 IM  
US CA TB 117-2013

# Leather Pelle

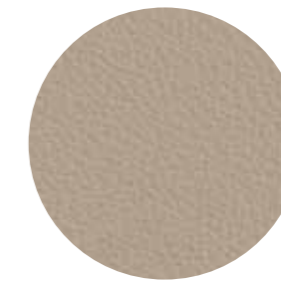
CATEGORY P / CATEGORIA P



PBI



PGC



PSA



PGA



PBE



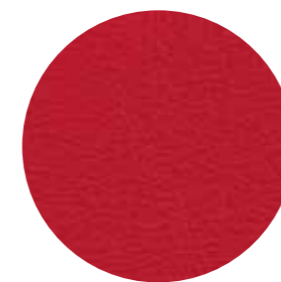
PGN



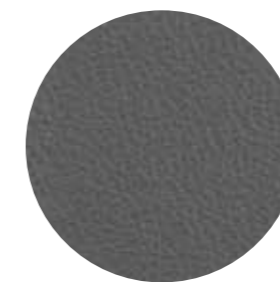
PTA



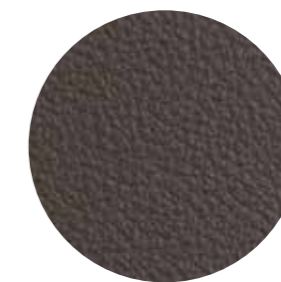
PTE



PRO



PGR



PMA



PNE

## technical specifications / specifiche tecniche

### • COLLECTION / COLLEZIONE



LINEA

### • COMPOSITION / COMPOSIZIONE

Mid grain leather  
Pelle mezzo fiore

### • RUBBING FASTNESS / SOLIDITÀ ALLO SFREGAMENTO Dry (500 Cycles) and Wet (250 Cycles) $\geq 4$ (UNI EN ISO 11640:1998)

- LIGHT FASTNESS / SOLIDITÀ ALLA LUCE  $\geq 5$  (UNI EN ISO 105 B02) (MET.5)
- FLAME RESISTANCE / RESISTENZA AL FUOCO  
BS 5852:1979  
BS EN 1021-1-2:2006  
IMO RES A652 (16)

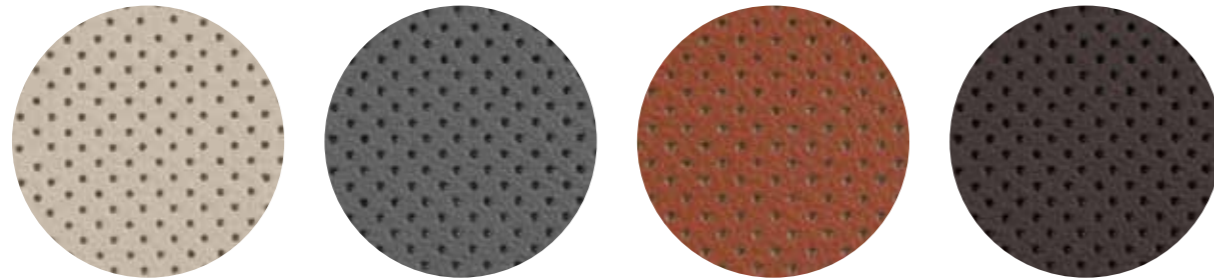
## cleaning / lavaggio

Clean with a damp cloth using water. Do not use detergents, solvents, bleached, abrasives. Pulire con un panno umido d'acqua. Non usare detersivi, solventi, candeggianti, abrasivi.

### • APPROVED / OMOLOGATO



CATEGORY P / CATEGORIA P



PGCF

PGRF

PTEF

PMAF

technical specifications / specifiche tecniche

• COLLECTION / COLLEZIONE



• COMPOSITION / COMPOSIZIONE

**Perforated mid grain leather**  
Pelle mezzo fiore traforata

• RUBBING FASTNESS / SOLIDITÀ ALLO SFREGAMENTO

**Dry (500 Cycles) and Wet (250 Cycles) ≥4**  
(UNI EN ISO 11640:1998)

• LIGHT FASTNESS / SOLIDITÀ ALLA LUCE

**≥5 (UNI EN ISO 105 B02) (MET.5)**

• FLAME RESISTANCE / RESISTENZA AL FUOCO

**BS 5852:1979**  
**BS EN 1021-1-2:2006**  
**IMO RES A652 (16)**

cleaning / lavaggio

**Clean with a damp cloth using water. Do not use detergents, solvents, bleached, abrasives.**

Pulire con un panno umido d'acqua. Non usare detersivi, solventi, candeggianti, abrasivi.

• APPROVED / OMOLOGATO



only for collection / solo per collezioni



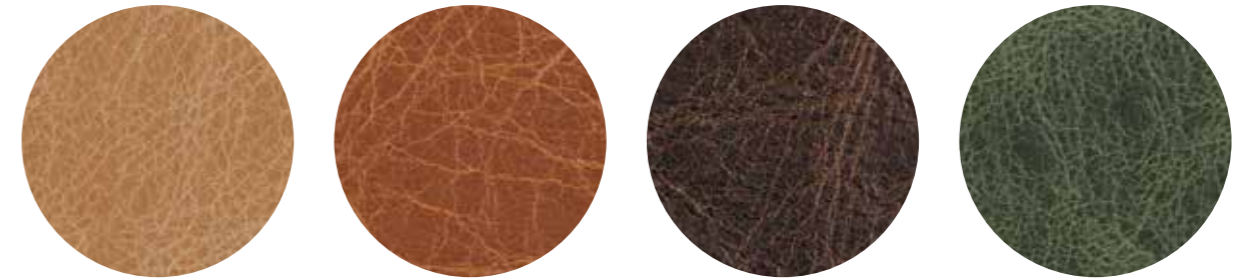
**Inner part of the back, upper part of the seat.**

Lato interno dello schienale e parte superiore del sedile.

Vic / Vic Metal



CATEGORY P / CATEGORIA P



PBS

PCO

PMS

PVE

technical specifications / specifiche tecniche

• COLLECTION / COLLEZIONE



• COMPOSITION / COMPOSIZIONE

**Vintage mid grain leather**  
Pelle mezzo fiore anticata

• RUBBING FASTNESS / SOLIDITÀ ALLO SFREGAMENTO

**Dry (50 Cycles) and Wet (20 Cycles) ≥3**  
(EN ISO 11640:1998)

• LIGHT FASTNESS / SOLIDITÀ ALLA LUCE

**≥2/3 (EN ISO 105-B02) (MET.5)**

• FLAME RESISTANCE / RESISTENZA AL FUOCO

**BS 5852:1979**  
**BS EN 1021-1-2:2006**

cleaning / lavaggio

**Clean with warm and damp cloth. Do not use detergents, solvents, bleached, abrasives.**

Pulire con acqua calda e un panno umido. Non usare detersivi, solventi, candeggianti, abrasivi.

only for collections / solo per collezioni



Malmö

Inga

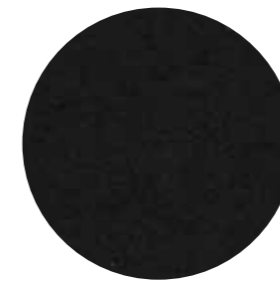
# Hard leather

## Cuoio

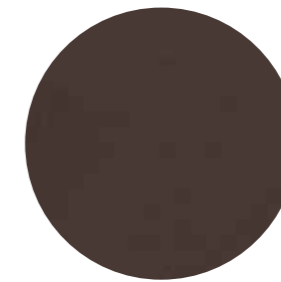
CATEGORY F / CATEGORIA F



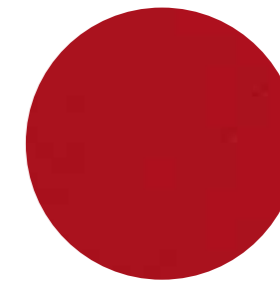
F 07



F 05



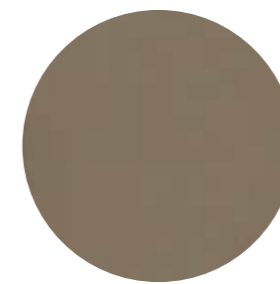
F 01



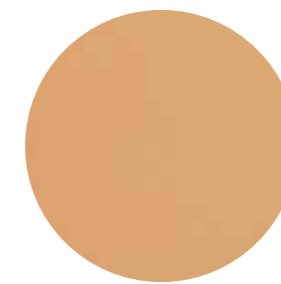
F 06



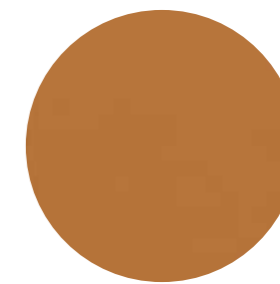
F 09



F 08



F 03



F 04

### technical specifications / specifiche tecniche

- **COMPOSITION / COMPOSIZIONE**  
Genuine leather, tanned with vegetable substances.  
Cuoio naturale, conciato con sostanze vegetali.

- **RUBBING FASTNESS / SOLIDITÀ ALLO SFREGAMENTO**  
Satisfactory up to maximum 700 abrasions in humid environment and 1000 abrasions in dry environment.  
Soddisfacente sino a max 700 abrasioni all'umido e 1000 abrasioni al secco.

### cleaning / lavaggio

Clean with a damp cloth using water.  
Pulire con un panno umido d'acqua.



### only for collections / solo per collezioni



Fox



Gliss



Inga



Kuadra



Kuadra XL



Malmö

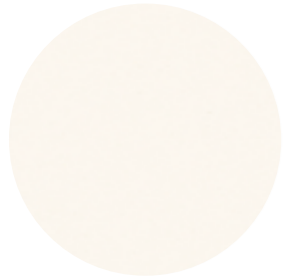


Mood



Woody

CATEGORY F / CATEGORIA F



F 18



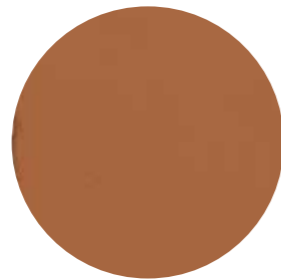
F 11



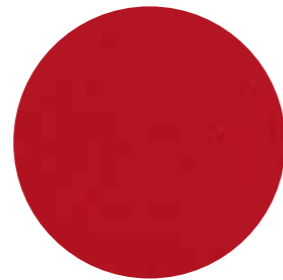
F 12



F 19



F 13



F 17

technical specifications / specifiche tecniche

- **COMPOSITION / COMPOSIZIONE**  
Regenerated hide leather.  
Tanned leather cuttings and shavings linked with natural rubber lattelx.  
Cuoio rigenerato. Ritagli e rasatura di cuoio conciato legati con lattice di gomma naturale.

- **ABRASION / ABRASIONE**  
Dry and wet >1000 (UNI EN ISO 7724)
- **LIGHT FASTNESS / SOLIDITÀ ALLA LUCE**  
4-5 Xenotest Method
- **FLAME RESISTANCE / RESISTENZA AL FUOCO**  
BS EN 1021 1&2  
BS 5852 Part 1  
US CA TB 117 E Part 1

cleaning / lavaggio

Clean with a damp cloth using water.  
Pulire con un panno umido d'acqua.

only for collections / solo per collezioni



Inga

Kuadra

Kuadra XL

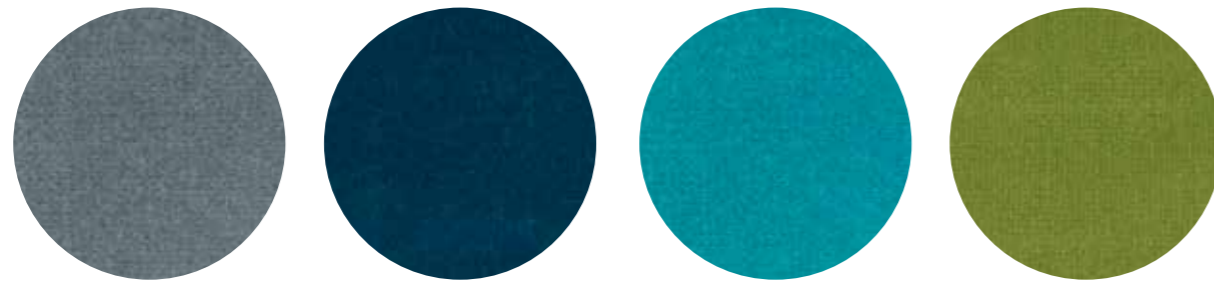


# Velvet

## Velluto



CATEGORY E / CATEGORIA E



E 04

E 03

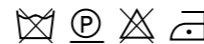
E 05

E 02



E 01

technical specifications / specifiche tecniche

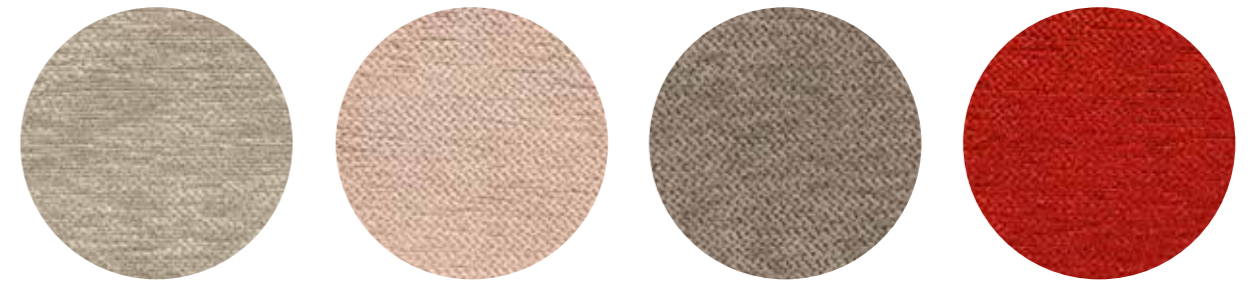


- COLLECTION / COLLEZIONE  
**DEDAR**  
ADAMO & EVA
- COMPOSITION / COMPOSIZIONE  
100% Cotton

- ABRASION / ABRASIONE  
50.000 cycles, Martindale (ISO 12947-2)
- RUBBING FASTNESS / SOLIDITÀ ALLO SFREGAMENTO  
Dry 4-5 and Wet 3-5, scale 1-5  
(ISO 105-X12)

- LIGHT FASTNESS / SOLIDITÀ ALLA LUCE  
4-6, scale 1-8 (ISO 105-B02)

CATEGORY G / CATEGORIA G

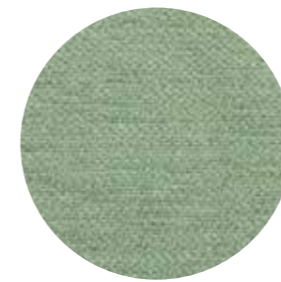


G 180

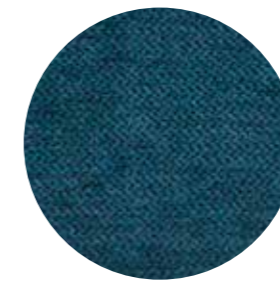
G 182

G 181

G 185



G 183



G 184

technical specifications / specifiche tecniche



- COLLECTION / COLLEZIONE  
**kvadrat** - STILL  
DESIGNER Georgina Wright
- COMPOSITION / COMPOSIZIONE  
100% TREVIRA CS®
- ABRASION / ABRASIONE  
50.000 cycles, Martindale  
(EN ISO 12947)
- RUBBING FASTNESS / SOLIDITÀ ALLO SFREGAMENTO  
Dry and Wet 4-5, scale 1-5  
(EN ISO 105-X12)

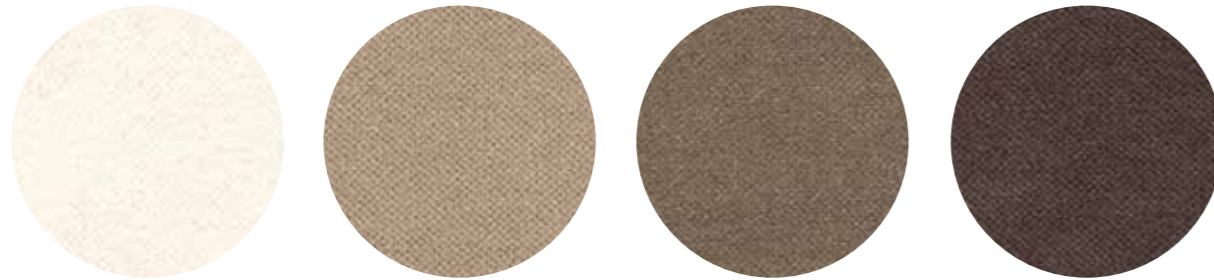
- PILLING  
4-5, scale 1-5 (EN ISO 12945)
- LIGHT FASTNESS / SOLIDITÀ ALLA LUCE  
5-7, scale 1-8 (ISO 105-B02:2014)
- SOUND ABSORPTION / ASSORBIMENTO ACUSTICO  
folded:  $\alpha_w = 0.85$  Class B (ISO 11654)
- FLAME RESISTANCE / RESISTENZA AL FUOCO  
BS 5852 Crib 5  
BS 5852 Part 1  
BS 5867 Part 2 type B  
DIN 4102 B1

- EN 1021-1/2  
IMO FTP Code 2010:Part 8  
NF D60-013  
NF P92 57 M1  
ÖNORM B1/Q1  
SN 198 898 5.2  
UNI 9175 Classe 1 IM  
US CA TB 117-2013

- APPROVED / OMOLOGATO



CATEGORY H / CATEGORIA H

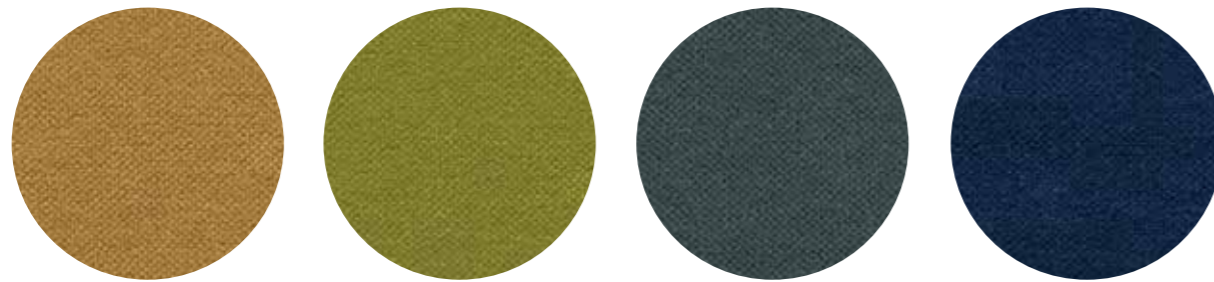


H 40

H 44

H 45

H 46

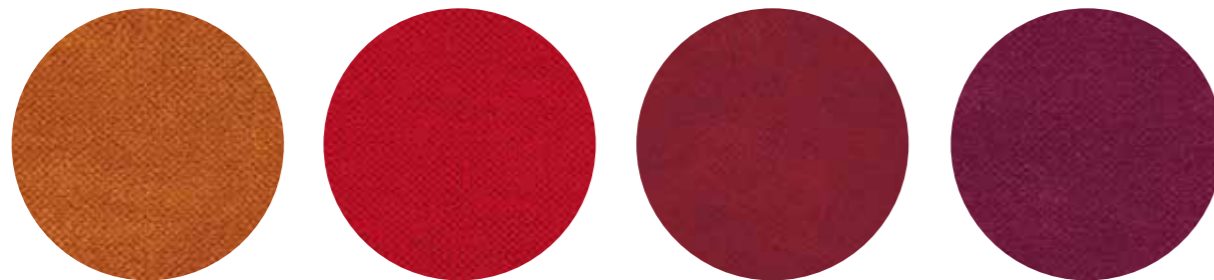


H 43

H 49

H 51

H 50



H 48

H 53

H 42

H 47



H 41

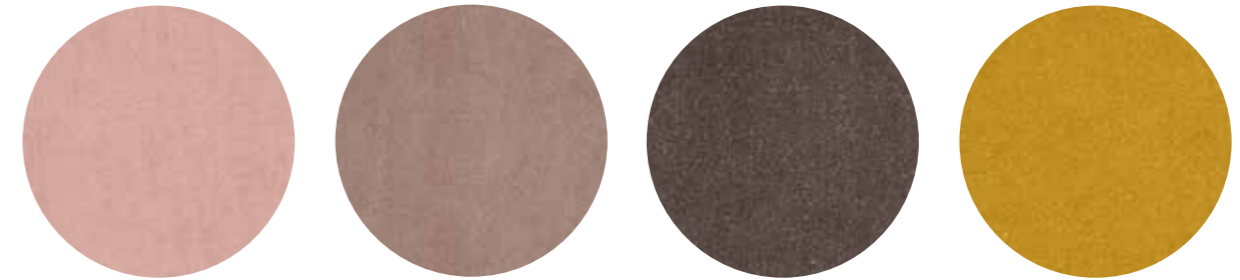
technical specifications / specifiche tecniche



- COMPOSITION / COMPOSIZIONE  
100% TREVIRA CS®
- ABRASION / ABRASIONE  
190.000 cycles, Martindale  
(EN ISO 12947-2)
- RUBBING FASTNESS / SOLIDITÀ ALLO SFREGAMENTO  
Dry and Wet 4-5, scale 1-5  
(EN ISO 105-X12)
- PILLING  
5, scale 1-5 (EN ISO 12945-2)
- LIGHT FASTNESS / SOLIDITÀ ALLA LUCE  
5, scale 1-8 (EN ISO 105-B02)

- SOUND ABSORPTION / ASSORBIMENTO ACUSTICO  
folded:  $\alpha_w = 0.70$  (EN ISO 354:2003)
- FLAME RESISTANCE / RESISTENZA AL FUOCO  
BS 5852 Part 0,1  
DIN 4102 B1  
EN 1021-1&2  
IMO MSC 307(88) Annex 1 Part 7-8  
NF P 92-503-507 M1  
NFPA 260:2019  
UNI 9177 Classe 1  
UNI 9175 Classe 1 IM  
US CA TB 117-2013

CATEGORY N / CATEGORIA N

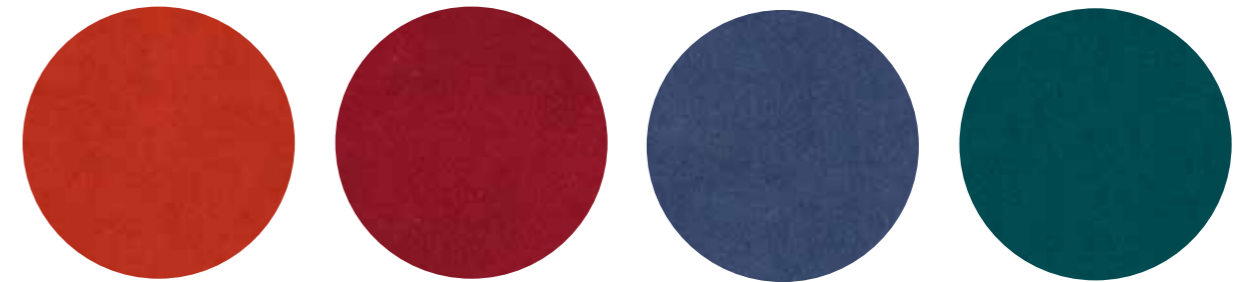


N 20

N 21

N 22

N 23



N 24

N 25

N 26

N 27

technical specifications / specifiche tecniche



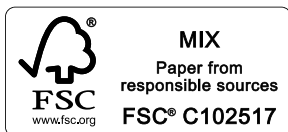
- COLLECTION / COLLEZIONE  
**kvadrat-SAHCO**  
BALBOA  
DESIGNER Najberg
- COMPOSITION / COMPOSIZIONE  
100% Polyester FR
- ABRASION / ABRASIONE  
100.000 cycles, Martindale  
(EN ISO 12947)

- PILLING  
4, scale 1-5  
(EN ISO 12945-2)
- LIGHT FASTNESS / SOLIDITÀ ALLA LUCE  
4-6, scale 1-8  
(EN ISO 105-B02)
- SOUND ABSORPTION / ASSORBIMENTO ACUSTICO  
folded:  $\alpha_w = 0.80$  Class B  
(ISO 11654)

- FLAME RESISTANCE / RESISTENZA AL FUOCO  
BS 5852 Crib 5  
BS 5867 Part 2 Type B  
EN 1021-1/2  
EN 13501, B-s1, d0  
IMO FTP Code 2010: Part 8  
ÖNORM B1/Q1  
SN 198 898 5.2  
UNI 9175 Classe 1 IM  
US CA TB 117-2013

- APPROVED / OMOLOGATO





**Pesi, dimensioni e colori sono indicativi. Pedrali si riserva la facoltà di apportare modifiche o migliorie senza alcun preavviso.**  
Weights, measurements and colours are indicative. Pedrali reserves the right to modify or upgrade the products without prior notice.

#### **Industrial property right | Diritto di proprietà industriale**

**I contenuti del presente catalogo, quali, a titolo esemplificativo, le opere, le immagini, le fotografie, i documenti, i disegni, le figure, i loghi ed ogni altro materiale, in qualsiasi formato, pubblicato sono protetti a livello mondiale dal diritto d'autore e da ogni altro diritto di proprietà intellettuale di PEDRALI.**

The contents of the present catalogue such as, by way of example, the works, the images, the pictures, the documents, the drawings, the forms, the logos and all other materials, published in any format, are worldwide protected by copyrights and any other industrial intellectual property right of Pedrali.